


Tools, Tips, and Workflows

How to Sync Profile and 3D Viewing Windows

BSAU | AWG



Nancy Graham
May 2013
Revision 1.0

Would you like the Profile and 3D Viewer windows to sync up? They can! By selecting the  **Pan 3D Viewer with Profile** button on the Viewer Integration toolbar, you can pan the 3D Viewer window with the Profile window.

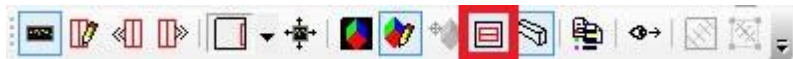


Figure 1

Here is an example:

I've defined the profile of a road cross section in the Map view.

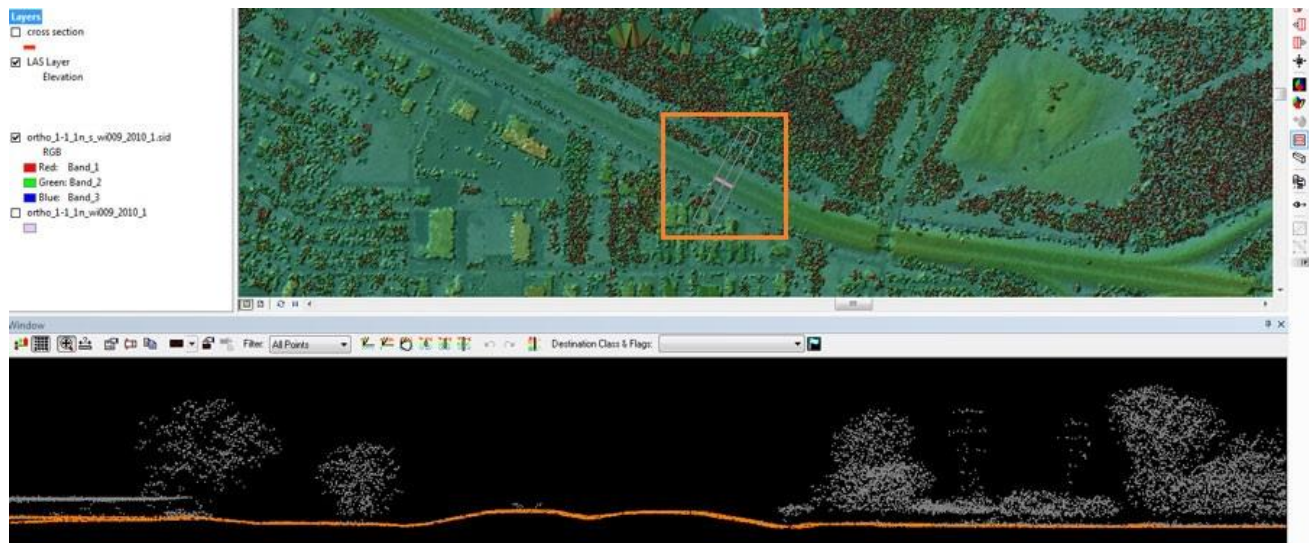






Figure 2

 LP360 Basic Edition
 LP360 Standard Edition
 LP360 sUAS Edition
 LP360 Advanced Edition

 ArcGIS
 Windows
 GeoCue

Page 1 of 2

QCoherent Software LLC
www.LP360.com
256-461-8289 (phone)
256-461-8249 (fax)

Tools, Tips, and Workflows

How to Sync Profile and 3D Viewing Windows



Next I've defined the extent of my 3D Viewer window in a different area of the Map view.

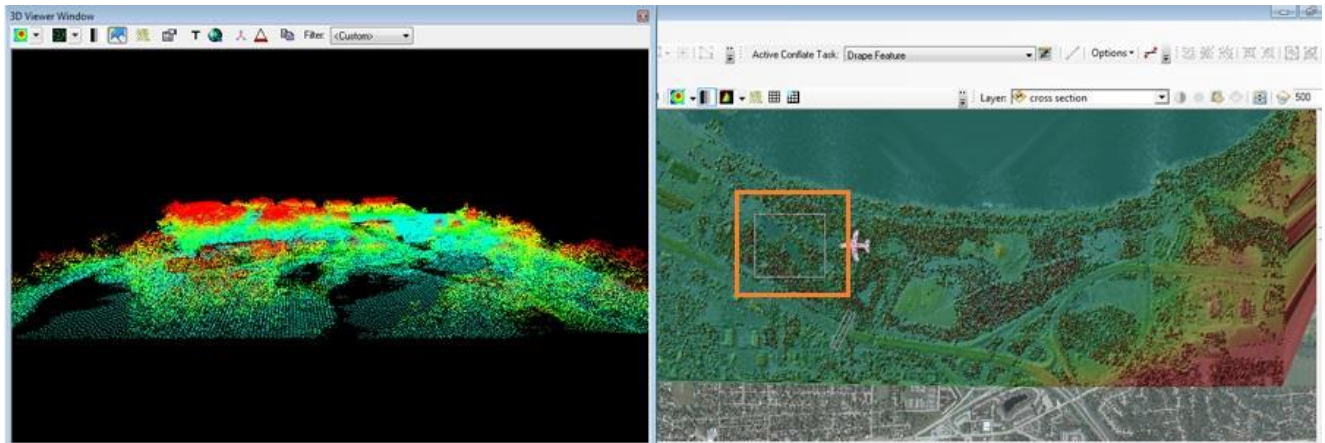



Figure 3

Now I select the  **Pan 3D Viewer with Profile** button, and you see that the 3D extent jumps to the defined profile in the Map view. The 3D Viewer window is also now displaying relative to the profile window.

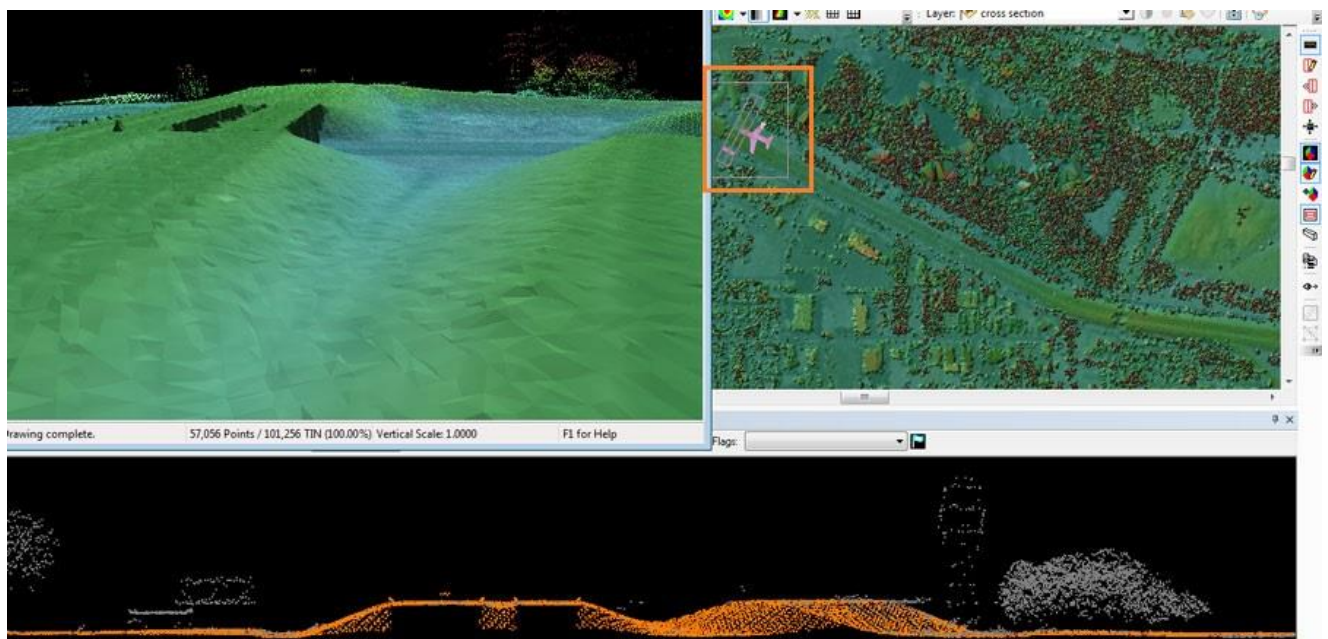


Figure 4

Now, if you click in the Profile window and scroll, the Profile and 3D Viewer windows pan together.