

Tools, Tips, and Workflows

Select LAS Files Graphically



Nancy Graham

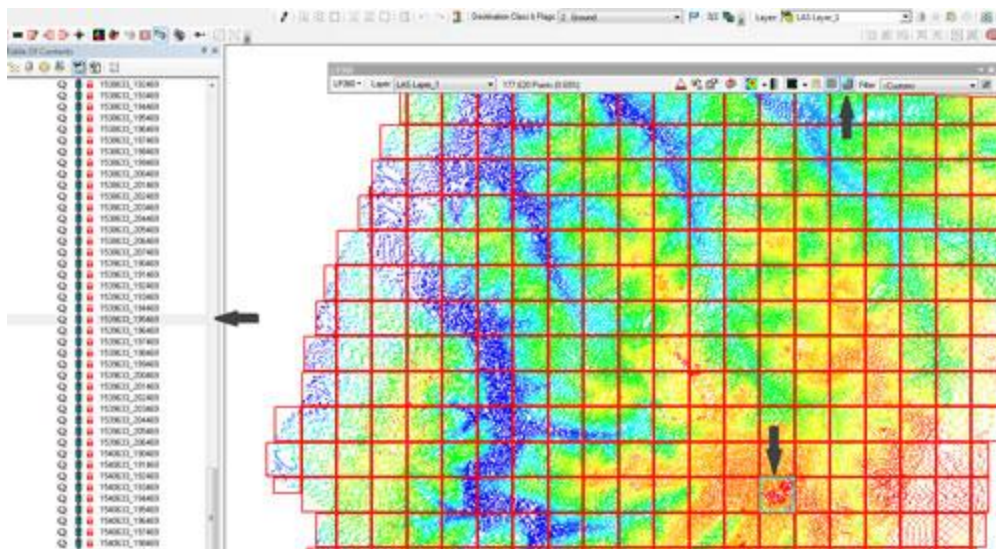
July 2013

Revision 1.0

Ever get frustrated trying to find one of your project LAS files in the LAS Files Table of Contents window? The **Select LAS Files Graphically** button is the tool you need. Simply click the Select LAS files graphically



button and then select the LAS tile that you want to find. The corresponding LAS file is highlighted in gray in the LAS Files Table of Contents window.



- LP360 Basic Edition
- LP360 Standard Edition
- LP360 sUAS Edition
- LP360 Advanced Edition

- ArcGIS
- Windows
- GeoCue