

Service Bulletin



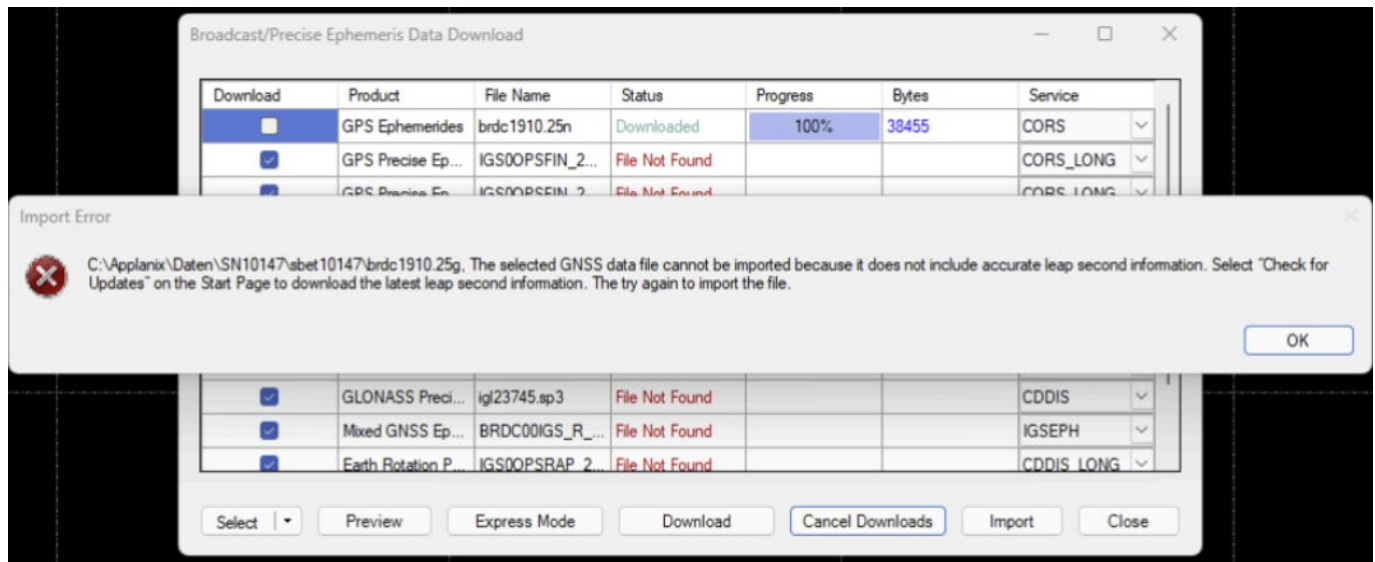
Leap Second Error on Import

July 2025

Background

Starting in July 2025, the Trimble ephemeris files that are downloaded by POSPac may intermittently not include the correct leap second information. POSPac will then show the following error, as it is unable to determine leap second information on its own:

"The selected GNSS data file cannot be imported because it does not include accurate leap second information"



Solution

To resolve this issue, please download the [LeapSecond.xml](#) file and use it to replace the existing file in the following location on the processing computer:

`C:\ProgramData\Trimble\LeapSecondsConfig`

For more information

For more information, contact marinesupport@applanix.com or techsupport@applanix.com.